

IDAM Facility D

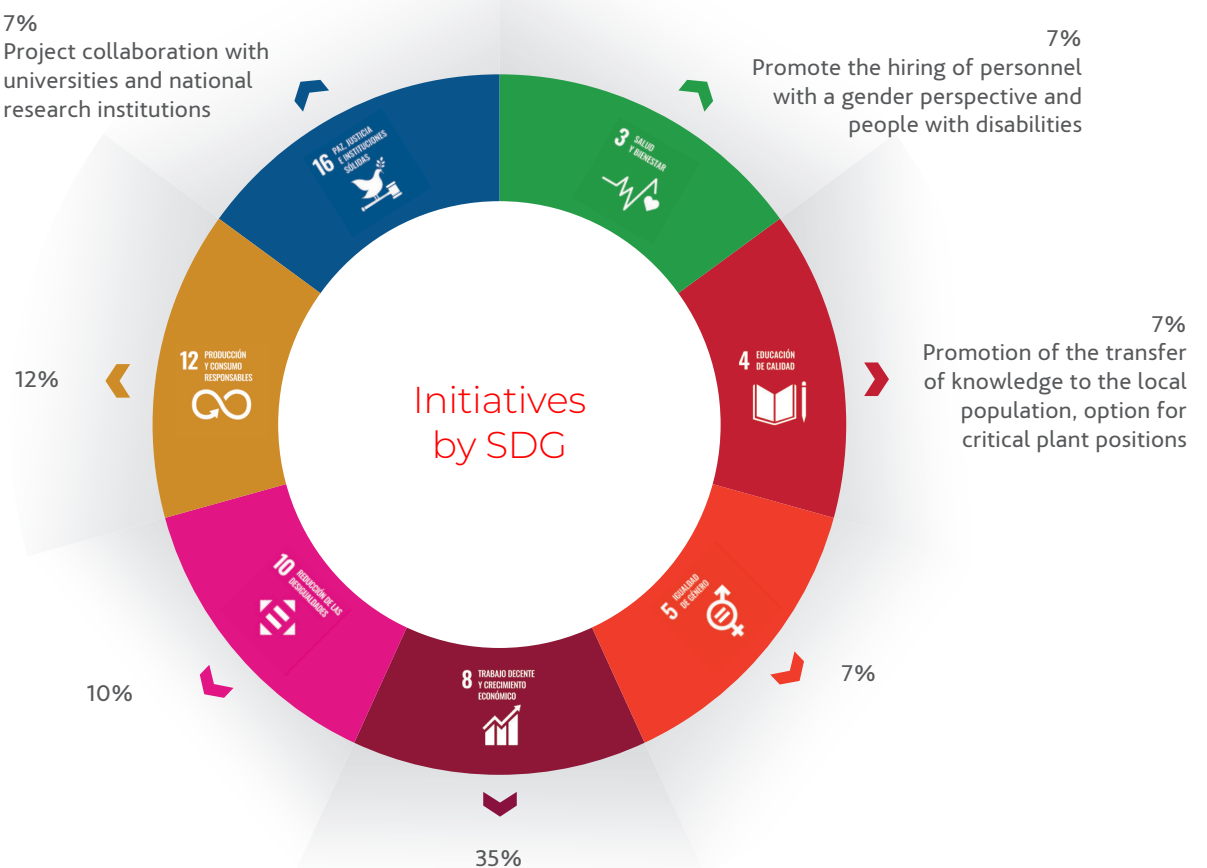
Sustainability initiatives

Facility D will produce 284,000 m³ per day as part of a large-scale Independent Water & Power Project (IWPP) that produce around 2,500 MW of electric power and reach 614,000 m³ per day after the start-up of the new facility. The contract covered the design, construction and actual operation and maintenance of the facility.

The plant represented a real milestone in the world of desalination, as it is the first time that reverse osmosis technology was used on a large scale in Qatar. To date, only evaporation technology was used to desalinate water.



The **Social Impact Management (SIM)** methodology implemented in IDAM Facility D carry out different initiatives with a social, economic and environmental dimension, in order to contribute positively in the wellbeing of workers and other stakeholders of the project, promoting the development of the area of influence.

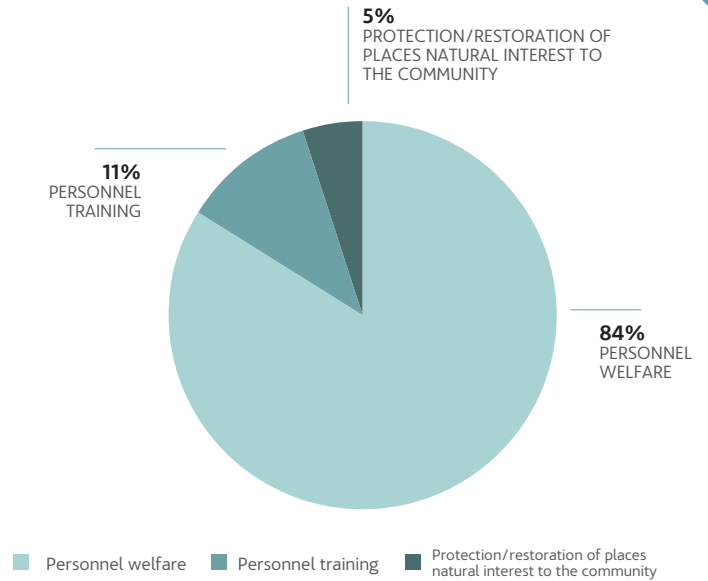


In 2020, the implementation and monitoring of the SIM methodology in Facility D project was audited. KPMG concluded that Acciona has been correctly applied the Corporate Standards for Management Social Impact in an **outstanding level**; indicating as best practices: 1) measurement of the Sustainable Development Goals contribution; and 2) initiatives about local suppliers, local workforce hiring, local people training, workers integration activities, environmental protection and woman empowerment promotion.



➤ ACCIONA invests in and develops infrastructure assets to make our planet more sustainable. This approach is designed to create a positive impact on people's lives and on the planet, which we call regenerative. Meaning making our actions people-centric, achieving a positive planet, making an effort to be leaders of sustainable transformation and integrating sustainable solutions to transform our businesses.

Our activities contribute to SDG6, guaranteeing the availability of water and its sustainable management, as well as sanitation for all.



ASSOCIATED COST (€) BY SOCIAL INITIATIVE CATEGORY

(*) According to internal reports 02/02/2022

Stakeholders

GIS's methodology includes a stakeholders' identification and prioritization through Resilience tool. The identification is made jointly with the project's social responsible. Stakeholders are then parameterized according to three criteria: level of interest (x), power/influence (y) and vulnerability (z). Next, the tool returns us the prioritization of the stakeholders and a network of relationships between them (identifying possible interactions and influences) (graphic below).

Legend

- | | |
|---|--|
| DIRECT EMPLOYEES | LOCAL AUTHORITIES |
| INDIRECT EMPLOYEES | PROVIDES OF GOODS AND/OR SERVICES (NATIONAL) |
| PROVIDES OF GOODS AND/OR SERVICES (TOTAL) | NATIONAL AUTHORITIES |
| CLIENT | ANOTHER PUBLIC OR PRIVATE INSTITUTIONS |
| LOCAL COMMUNITY | |

